

Installation Instructions for Copper Pipe

IMPORTANT: Please make sure isolator tap is fully closed before you commence installation as the tap will pierce a hole into the live copper pipe.

Contact Filtered Naturally for this fitting www.filterednaturally.co.uk

1. Clamp the isolator tap to COLD copper pipe by tightening the screws (as pictured), taking care not to crush the copper pipe.

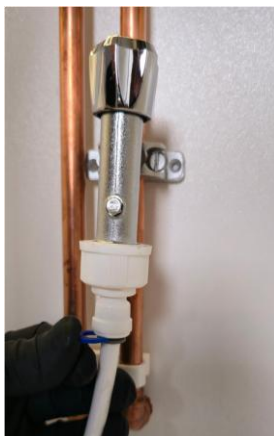


2. Unwind the nut (circled red) all the way.

3. Rotate tap Clockwise, you will feel some resistance as it pierces into the copper pipe. Once through, turn the tap clockwise until you feel a second resistance.



4. Re-tighten the clamp retaining screws of the tap (as step 1).
5. Rewind the nut (as step 2) to stop any unwanted rotation of the tap.
6. Attach the pipe from the outlet of the isolator tap going to the Inlet of the housing and attach blue clips.



6. Attach the pipe from the outlet of the isolator tap going to the Inlet of the housing and attach blue clips.

7. Successful installation pierces a hole into the copper pipe as shown below - the tap will self-seal the hole.

